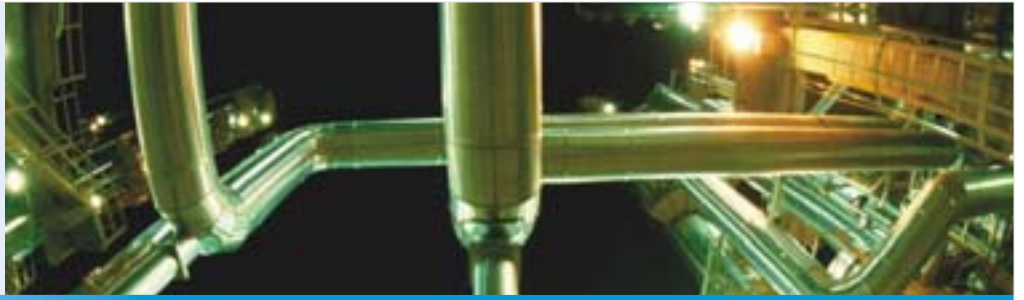


# Hazardous Area Lighting





# Contents



## INTRODUCTION



Flam eproof Bulkhead Luminaire



Flam eproof Luminaire For Fluorescent Tubular Lamp



Flam eproof Non-integral Wet Glass Luminaire



Flam eproof Integral Wet Glass Luminaire



Flam e Proof Non-integral Flood Light



Flam eproof Aviation Obstruction Light



Flam eproof Control Gear Box



Increased Safety Non Integral Wet Glass Luminaire



Increased Safety Integral Wet Glass Luminaire



Control Gear Box for Increased Safety Luminaire

# HAZARDOUS A

## Hazardous Area Lighting

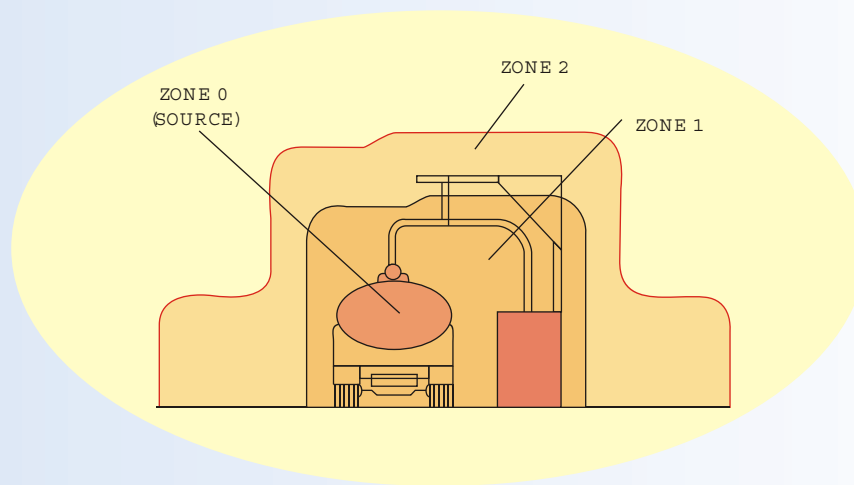
In the areas where flammable materials are manufactured, produced, processed or stored, mixing of flammable gases with air is likely to happen in the atmosphere. If due to the electrical equipment installed in such areas, ignition takes place due to a spark or fire, it can lead to a hazardous situation. Although the prime requirement is to avoid the occurrence of such conditions where this is not practical, special methods of safeguarding electrical apparatus must be employed.

Care should be taken to avoid flammable or explosive atmospheres, in order to have an ignition, both a flammable atmosphere and means of ignition must exist simultaneously.

### Types of Hazardous situations :

Depending on the presence of flammable material the hazardous areas are classified into Hazardous Zones.

### Typical illustration of Zone 0, Zone 1, Zone 2 areas with source of ignition



#### ZONE 0

##### THE EXPLOSIVE ATMOSPHERE IS CONTINUOUSLY PRESENT

A Zone in which an explosive mixture is continuously present (in the gaseous phase) inside a receptacle or a closed chamber constitute Zone 0.

#### ZONE 1

##### THE EXPLOSIVE ATMOSPHERE IS OFTEN PRESENT

A Zone in which an explosive mixture of Gas, Vapour or Dust is likely to occur in normal operations. In these areas flame proof luminaires and accessories are used.

Flame proof Enclosure - is one which will withstand when all the covers and accessories are properly secured, an internal explosion of the flammable gas or vapour through the joint gaps and flame paths provided in the enclosure.

Note: The term 'Flame proof' is synonymous with the term 'Explosion-proof' as used in USA or 'Explosion-Proof' type of protection used in Germany and other Continental countries.

#### ZONE 2

##### THE EXPLOSIVE ATMOSPHERE IS ACCIDENTALLY PRESENT

A Zone in which an explosive mixture is not likely to occur in normal operations and if it occurs will only exist for a short time (Leaks or negligent use). In these areas, Increased Safety Luminaires are used and are generally provided with gaskets and special lamp holders in case of fittings. These equipments are manufactured as per IS 8224/1976 and IS 6381/1972.

# HAZARDOUS AREA LIGHTING

It should be noted that fittings complying with the requirements as specified in IS 8224/1976 are not suitable for gases or vapour having ignition temperature below 200°C. The following is the list of gases or vapours known to have self/auto ignition temperature below 200°C.

- |                        |                      |
|------------------------|----------------------|
| 1. Ethyl nitrate       | 2. Isopropyl nitrate |
| 3. Carbon disulphide   | 4. Acetaldehyde      |
| 5. Diethyl ether       | 6. Dipropyl ether    |
| 7. Diethyl ether       | 8. Diamyl ether      |
| 9. Diethyl ether       | 10. Benzaldehyde     |
| 11. Ethyl methyl ether | 12. Diethyl peroxide |

### Temperature Classes

Ignition temperature is the lowest temperature at which a flammable gas mixture ignites. Flammable vapours and gases can be classified into temperature classes according to their ignition temperature. Surface temperature of the luminaire is likely to be higher than ambient temperature due to heat generated during fire or explosion inside the enclosure. The maximum surface temperature of the luminaire must always be lower than the ignition temperature of the gas mixture present in the air. Luminaire of appropriate specified temperature class should be selected based on the ignition temperature of the gas.

Temperature Class	Maximum Surface Temperature of Luminaires (C)
T1	450
T2	300
T3	200
T4	135
T5	100
T6	85

### Dustproof/Dust-tight

Luminaires are manufactured as per IS 4012 / IS 4013-1967 and are recommended to be installed in industries where in addition to the recognized explosives, many other dusts including practically all organic and inorganic dust, (dust of metals are flammable to some extent depending on the particle size), specific gravity of dust etc. are present.

Dusts have been broadly classified into the following groups.

Class 1 Dust which ignite and propagate flame readily, the source of heat required for ignition being small.

Class 2 Dust which ignite readily with flame but require a larger source of ignition.

Class 3 Dust which do not ignite.

Dust-tight luminaires are recommended for locations laden with Class 1 Dust. For other class of dust, dustproof lighting fittings may be used.

# HAZARDOUS A

## Ingress Protection System for Enclosures (IP)

This system outlined in IS 2147 is designed to indicate the standard degree of protection: (a) from ingress of solids and (b) from ingress of liquids which enclosures may exhibit and must not be confused with explosion protection techniques.

For luminaires the following IP numbers can only apply:

Drip proof	IP 22
Rain proof	IP 23
Splash proof	IP 34
Dustproof/Splashproof	IP 54
Dustproof/Jetproof	IP 55
Dust-tight/Jetproof	IP 65

Higher the numerical of the first and second characteristic, the greater degree of protection the enclosure offers. E.g. Jetproof

IP 55 meets all the less onerous degrees such as IP 22, IP 23, IP 34 and IP 54.

## Testing Authorities

All our Flameproof and Increased safety luminaires are tested and Certified by Central Institute of Mining and Fuel Research (CIMFR), Dhanbad.

## Standards

- (a) Flameproof Construction : IS:2148-2004 (IEC 60079-1/2001)
- (b) General design, rating, performance & T-class : IS:13346-2004 (IEC 60079-0/2000)
- (c) Weatherproof construction IP-65 : IS:12063-1987 (IEC 60529/1989)

## Table 3 of IS 2148/1981

Group of Enclosures Suitable for Particular Flammable Gas or Vapour (Clauses 1.4 and 3.1.2)

Group of Enclosures	Gas or Vapour
I	Methane (fire damp)
IIA	Ammonia, Industrial methane*, Blast furnace gas, Carbon monoxide, Propane, Butane, Pentane, Hexane, Heptane, Iso-Octane, Decane, Benzene, Xylene, Cyclohexane, Acetone, Ethyl methyl Ketone, Methyl acetate, Ethyl acetate, N-propyl acetate, N-butyl acetate, Amyl acetate, Chloroethylene, Methanol, Ethanol, ISO-butanol, N-Butanol, Amyl alcohol, Ethyl nitrate.
IIB	1,3-Butadiene, Ethylene, Diethyl ether, Ethylene oxide, Town gas, Coke-oven gas.
IIC	Hydrogen

\*Industrial methane includes methane mixed with not more than 10% by volume of hydrogen. Town gas may contain not more than 57% by volume of hydrogen and not more than 16% by volume of carbon monoxide, the remainder being a mixture of paraffin hydrocarbons and inert gas.

Note :

Due to our continuous efforts in developing products, in improvement - Bajaj Electricals Limited reserves the right to make changes in the design and data without any prior notice.

# AREA LIGHTING



## Flameproof Bulkhead Luminaire

BJFB 150/200 BC/ES (LM 6)

### Luminaire Body

Epoxy finish Cast Aluminium LM 6 housing.

Toughened Type A flat glass.

Two cable entries of 3/4" BS conduit are provided.

Lamp holders suitable for lamp type will be provided (2 pin BC / 3 pin BC / E 27)

### Lamp

Suitable for 100W /150W /200W GLS, 80W /125W HPMV, 70W SVMH /150W MH (E27) 160W MLL, 26W CFL -Retrofit.

### Temperature Range

80W MV/70W SV/70W MH/100W GLS -T4

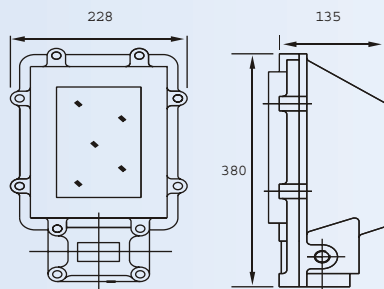
125W V/150W MH/150W GLS/200W GLS /160W MLL T3

26W CFL -Retrofit -T6

Suitable for Zone 1 & 2 areas where explosive gasses specified under gas groups IIA & IIB are present. This is a non integral luminaire suitable for indoor application. Separate control gear to be used in case of HID lamps.

### CIM FR Certificate

CIM FR/TC/SR/H 909 DATED 08.02.2008



## Flameproof Luminaire For Fluorescent Tubular Lamp

BJFFTL 136/236, 140/240, 128/228

### Luminaire Body

Cast Aluminium LM 6 housing with Epoxy finish. Heat resistant borosilicate tubular glass held in two aluminium cups. Two cable entries of 3/4" BS conduit are provided.

### Lamp

Single or Twin 36W /40W Fluorescent Tubular lamp/28W T5 lamp. Special variant for 18W /20W FTL also available.

### Temperature Range

T6

### Ingress Protection

IP 65

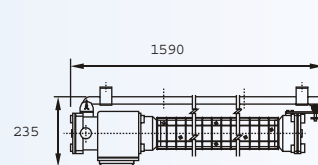
Suitable for Zone 1 & 2 areas where explosive gasses specified under gas groups IIA & IIB are present.

### CIM FR Certificate No

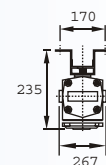
CIM FR/TC/SR/H 798 DTD 11.01.2008

### Note

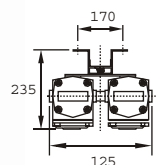
External Stove Enamel Reflector can be provided as an additional feature



BJFFTL-140/240



BJFFTL-140



BJFFTL-240



**Flameproof Non-integral Wet Glass Luminaire**

BJFW 80/125 MV NIBC/ES LM 6

**Luminaire Body**

Cast Aluminium LM 6 housing with Epoxy finish. Heat resistant and toughened glass enclosure type A with BC/E27 lamp holder. Painted MS wire guard. Two cable entries of 3/4" BS conduit are provided. Separate flameproof control gearbox of suitable rating to be used for HID lamps.

**Lamp**

Suitable for 80/125W MV, 70W SV/MH, 150W MH (E27), 200W GLS, 160W MLL, 23W /26W Retrofit CFL lamp.

**Temperature Range**

150W MH (E27), 200W GLS, 160W MLL -T3	
125W MV -	T4
80W MV/70W SV/70W MH -	T5
23W /26W Retrofit CFL -	T6

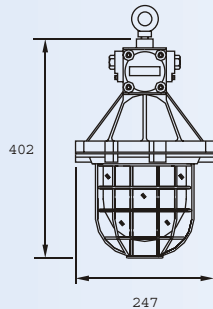
Ideal for use in Zone 1 & 2 areas where explosive gasses specified under gas groups IIA & IIB are present.

**Ingress Protection**

IP 65

**CIM FR Certificate No**

CIM FR/TC/SR/H 1136 DATED 19.03.2008



**Flameproof Non-integral Wet Glass Luminaire**

BJFW 400 MV CA (NI)

BJFW 400 SV/MH CA (NI) /BJFW 250 SV (NI)

**Luminaire Body**

Cast Aluminium LM 6 housing with Epoxy finish. Heat resistant and toughened glass enclosure type A. Painted MS wire guard. Two cable entries of 3/4" BS conduit are provided. Available in cast iron version for special application areas also. This is a non-integral luminaire. Separate flameproof control gearbox to be used as per the lamp rating.

**Lamp**

250W HPMV, 400W HPMV, 250W HPSV, 400W HPSV, 400W MH lamp.

**Temperature Range**

250W /400W HPMV -T3, 250W HPSV -T5, 400W HPSV/MH -T4

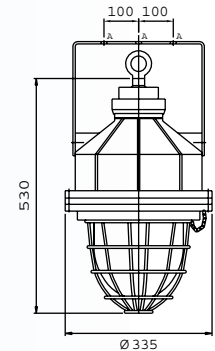
Suitable for use in Zone 1 & 2 areas where explosive gasses specified under gas groups IIA & IIB are present.

**Ingress Protection**

IP 65

**CIM R Certificate No**

CIM RI/TC/PA/382 DTD 18.08.2006



A = 3 Nos. Ø 12.5 HOLE



Flameproof Integral Wall Glass Luminaire  
For HPMV/HPSV and Metal Halide Lamp

BJFW 80/125 MV ICA BC/ES  
BJFW 70 SV/MH I

Luminaire Body

Cast Aluminium LM6 housing with Epoxy finish. Heat resistant and toughened glass enclosure-type A. Painted MS wire guard. Two cable entries of 3/4" BS conduit are provided. This is an integral luminaire. HID ballast and accessories fitted inside the housing.

Lamp

Suitable for 80W/125W HPMV, 70W HPSV/MH lamp.

Temperature Range

T4

Ideal for use in Zone 1 & 2 areas where explosive gasses specified under gas groups IIA & IIB are present.

Ingress Protection

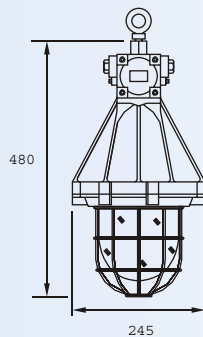
IP 65

CIM FR Certificate No

CIM FR/TC/SR/H 840 DATED 24.01.2008

Note

This luminaire can also be used as non integral for 250W MV/150SV/150MH BJFW 250W MV (NI), BJFW 150W SV (NI), BJFW 150W MH (NI)



Flameproof Integral Wall Glass Luminaire  
For HPMV/HPSV And Metal Halide Lamp

BJFW 250 MV ICA  
BJFW 150 SV/MH I

Luminaire Body

Cast Aluminium LM6 housing with Epoxy finish. Heat resistant and toughened glass enclosure type A. Painted MS wire guard. Two cable entries of 3/4" BS conduit are provided. This is an integral luminaire. HID Ballast & accessories fitted inside the housing.

Lamp

Suitable for 150W HPSV/MH lamp, 250 HPMV lamp.

Temperature Range

T4

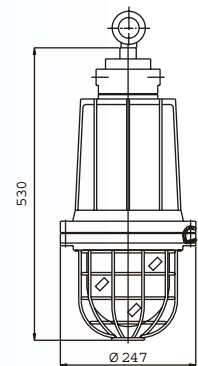
Ideal for use in Zone 1 & 2 areas where explosive gasses specified under gas groups IIA & IIB are present.

Ingress Protection

IP 65

CIM FR Certificate No

CM R/TC/P/H 378 DATED 18.08.2006



BJFW 250 MV I





### Flameproof Non-integral Flood Light

BJFFL 250/400 NI

#### Luminaire Body

Cast Aluminium LM 6 Epoxy finish lamp housing. Heat resistant and toughened flat glass Type A. One Cable entry through 3/4" BS conduit. This is a non integral luminaire and suitable flame proof control gearbox should be separately used.

Ideal for use in zone 1 & 2 areas where explosive gasses specified under gas groups IIA & IIB are present.

#### Lamp

Suitable for 250 HPM V / 250W HPSV / 400W HPSV / 400W MH.

#### Temperature Range

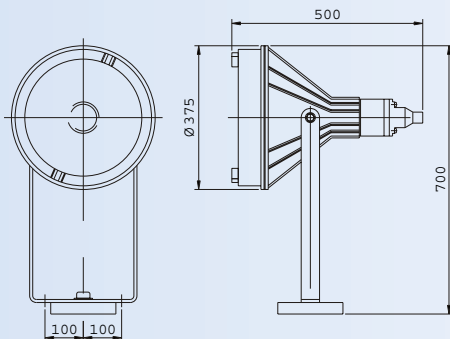
250W MV -T5, 400W SVMH -T4, 250W SVT6.

#### Ingress Protection

IP 65

#### CM RICERTIFICATE NO

CM RI/TC/P/H 387 DTD .21.08.2006



BJFFL 250/400 MV NI



### Flameproof Aviation Obstruction Light

BJFAOL 01

#### Luminaire Body

Cast aluminium LM 6 yellow epoxy powder coated housing. Heat resistant and toughened type A glass enclosure. Two cable entries of 3/4" BS conduit are provided.

Ideal for use in zone 1 & 2 areas where explosive gasses specified under gas groups IIA & IIB are present.

#### Lamp

Suitable for Neon spiral lamp 75VA

#### Temperature Class

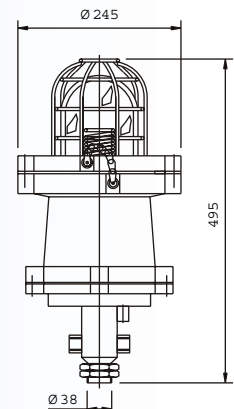
T6

#### Ingress Protection

IP 65

#### CM RICERTIFICATE NO

CM RI/TC/P/H 354 dt. 10th Aug 2006.



BJFAOL-01



### Flameproof Control Gear Box

BJFC 80W /125W /250W MV CA  
 BJFC 70W /150W SV/MH  
 BJFC 400 MV/SV/MH

#### Housing

Die-cast aluminium IM6 housing. Completely wired with control gear accessories. Three cable entries of 3/4" BS conduit are provided. Ideal for use in ZONE 1 & 2 areas where explosive gasses specified under gas groups IIA & IIB are present.

#### Lamp

Versions available for 80W /125W /250W HPMV lamp, 70W /150W HPSV/Metal Halide lamp and 3 X 26W CFL. Also available for 400W HPMV/400W HPSV/MH lamp.

#### Temperature Range

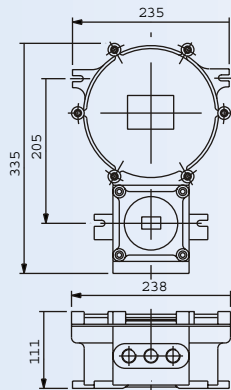
T6

#### Ingress Protection

IP65

#### CIM FR Certificate No

CIM FR/TC/SR/H800 DTD. 15/01/2008 for 80W /125W /250 HPMV, 70/150SV/MH  
 CIM FR/TC/SR/H837 DTD. 23/01/2008 for 400W HPMV/HPSV/MH lamps.



### Increased Safety Non-Integral Well Glass Luminaire

BJDP/DT/TE/ISW -200 IM6 NI

#### Luminaire Body

Cast Aluminium IM6 housing with Epoxy finish. Heat resistant well glass cover. Painted MS wire guard. Two cable entries of 3/4" BS conduit are provided. This is a dustproof, dust tight, totally enclosed, increased safety non-integral luminaire. Separate increased safety control gear box to be used as per Zone 2 the lamp rating.

#### Lamp

Suitable for 150/200W GLS, 160W MLL, 80W /125W HPMV, 70W HPSV -Elliptical, 23W Retrofit CFL.

#### Ingress Protection

IP65

#### Temperature Class

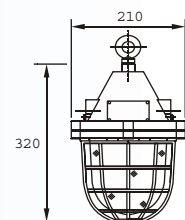
Volts 250 Max.	GLS		HPMV		MLL	SV	CFL
	150W	200W	80W	125W	160W	70W	23W
Temperature Classification	T5	T5	T5	T5	T5	T5	T5

#### CM RICertification

CM RI/TC/P/H1335 DTD 10.11.1998

#### Applicable standards and certification

- IS : 2147-1962 Specification for Degree of protection
- IS : 8224-1976 Specification for Electric Lighting Fittings for Div. 2 areas
- IS : 6381/1972 Specification of Electrical Apparatus with type of protection 'e'
- IS : 6381/1972 Specification of construction of Electrical Apparatus with type of protection 'e'
- IS : 13947 (part 1) 1993 for IP 65





### Increased Safety Non-Integral Well Glass Luminaire

BJISW 80/125 MV NI/70 SV NI

#### Luminaire Body

Cast Aluminium LM 6 housing with Epoxy finish. Heat resistant well glass cover, Ideal for use in Zone 2. Painted MS wire guard. Two cable entries of 3/4" BS conduit are provided. This is a dustproof, dust tight, totally enclosed, increased safety non-integral luminaire. Separate increased safety control gearbox to be used as per the lamp rating.

#### Lamp

Suitable for 150/200W GLS, 160W MLL, 80W/125W HPMV, 70W HPSV - Elliptical, 23W Retrofit lamp.

#### Ingress Protection

IP 65

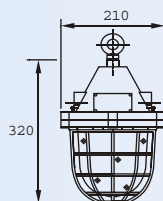
#### CMRI Certification

CMRI/TC/P/H 1455 Dated 26.11.98 for BJISW

#### Applicable standards and certification

- IS : 2147-1962 Specification for Degree of protection
- IS : 8224-1976 Specification for Electric Lighting Fittings for Zone 2 areas
- IS : 6381/1972 Specification of Electrical Apparatus with type of protection 'e'
- IS : 6381/1972 Specification of construction of Electrical Apparatus with type of protection 'e'
- IS : 13947 (part 1) 1993 for IP 65

Watts 250 Max.	GLS		HPMV		BLL	SV	CFL
	150W	200W	80W	125W	160W	70W	23W
Temperature Classification	T5	T5	T6	T5	T5	T6	T6



### Increased Safety Integral Well Glass Luminaire

BJISW 80/125 MV (I)

BJISW 70SV (I)

#### Luminaire Body

Cast Aluminium LM 6 housing with Epoxy finish. Heat resistant and toughened glass cover-type A. Painted MS wire guard. Two cable entries of 3/4" BS conduit are provided.

Ideal for use in areas where explosive or ignitable gases are present (Division 2 areas).

Ingress protection: IP 65

#### Lamp

Suitable for 80/125W MV lamp, 70W HPSV lamp. HID ballasts and accessories wired inside the housing. It can also be used for 250W HPMV as non integral luminaire. Separate control gear box to be used for 250W HPMV version - BJISW 250 MV NI.

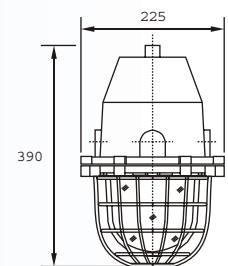
#### CMRI Certification

This luminaire has been tested and certified by CMRI, Dhanbad vide their letter Ref.No.

- CMRI/TC/P/H 1260 DATED 14-10-1999
- CMRI/TC/ADDEN/H 193 DATED 16-02-2000
- CCENo.R1(1)136/ALPINE/418 dated 15-02-2000

#### Applicable standards and certification

- IS : 2147-1962 Specification for Degree of protection
- IS : 8224/1976 Specification for Electric Lighting Fittings for Division 2 areas
- IS : 6381/1972 Specification of construction of Electrical Apparatus with type of protection 'e'
- IS : 13947 (part 1) 1993 for IP 65.





## Control Gear Box for Increased Safety Luminaire

BJISCG 80/125/250 MV  
BJISCG 70/150 SV

### HOUSING

Die-cast aluminium LM6 housing. Completely wired with control gear accessories. Three cable entries of 3/4" BS conduit are provided.

Real for use in Zone 1 & 2 areas where explosive or ignitable gas mixtures are present for a short period.

### Lamp

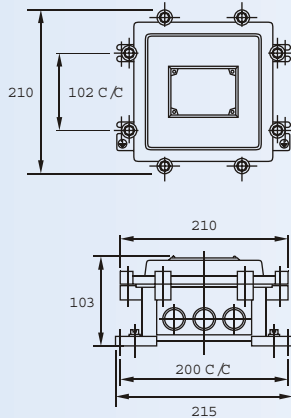
Suitable for 80/125W HPMV, 70W HPSV, 150W HPSV, 250MV lamp. Pre-wired with open construction ballast and accessories suitable for lamp rating.

### Ingress Protection

IP 65

### CMR Certificate No

CMR I/TC/P/SL/H1454 DTD 26/11/1998 for 80W/125W HPMV, 70W HPSV  
CMR I/TC/P/H1361 DTD 12.01.1999 for 250W HPMV, 150W HPSV



# FLAM EPROOF LUM INAIRES PRODUCT RANGE DETAILS

SR.NO.	CM FR REVALIDATION CERTIFICATE NO. & DATE	CM FR SUPPLM ENTARY CERTIFICATE TO REVALIDATION CERTIFICATE NO. & DATE	ITEM	CAT NOS.	IAMP RATING	TEMP. RANGE	IP	ZONE	GAS GROUP				
1	CM FR/IC/SR/H840 DTD.24.01.2008	CM FR/IC/S/693 DTD.19.11.2008	BJFW -250 FLAM EPROOF/W P W EILGLASS LUM INAIRES	BJFW -250 M V (N)	250 W HPM V	T3	IP 65	1 & 2	IA & IB				
				BJFW -80 M V (I)	80 W HPM V		IP 65	1 & 2	IA & IB				
				BJFW -125 M V (I)	125 W HPM V	T4	IP 65	1 & 2	IA & IB				
				BJFW -70 SV (I)	70 W HPSV		IP 65	1 & 2	IA & IB				
				BJFW -70 M H (I)	70 W M H		IP 65	1 & 2	IA & IB				
				BJFW -150 SV (N)	150 W HPSV	T4	IP 65	1 & 2	IA & IB				
				BJFW -150 M H (N)	150 W M H	T4	IP 65	1 & 2	IA & IB				
				BJFW -150 M H (E27) (I)	150 W M H (E27)	T3	IP 65	1 & 2	IA & IB				
				BJFW -3X26 CFL (I)	3X26 W CFL	T6	IP 65	1 & 2	IA & IB				
				BJFW -300 GLS	300 W GLS		IP 65	1 & 2	IA & IB				
				2	CM FR/IC/SR/H1136 DTD.19.03.2008	CM FR/IC/S/694 DTD.19.11.2008	BJFW -80/125 FLAM EPROOF/W P NON-INTEGRAL W EILGLASS LUM INAIRES	BJFW -80 M V (N)	80 W HPM V	T5	IP 65	1 & 2	IA & IB
BJFW -125 M V (N)	125 W HPM V	T4	IP 65					1 & 2	IA & IB				
BJFW -70 SV (N)	70 W HPSV	T5	IP 65					1 & 2	IA & IB				
BJFW -70 M H (N)	70 W M H	T5	IP 65					1 & 2	IA & IB				
BJFW -150 SV (E27) (N)	150 W M H (E27)	T3	IP 65					1 & 2	IA & IB				
BJFW -1X23 CFL (N)	23 W CFL	T6	IP 65					1 & 2	IA & IB				
BJFW -3X26 CFL (N)	3X26 W CFL	T6	IP 65					1 & 2	IA & IB				
BJFW -200 GLS (N)	200 W GLS	T3	IP 65					1 & 2	IA & IB				
BJFW -160 M LL (N)	160 W M LL	T3	IP 65					1 & 2	IA & IB				
3	CM FR/IC/SR/H800 DTD.15.01.2008	CM FR/IC/S/696 DTD.19.11.2008	BJFC -80/125/250 FLAM EPROOF/W P CONTROL GEAR BOX					BJFC -80 M V	80 W HPM V		IP 65	1 & 2	IA & IB
								BJFC -125 M V	125 W HPM V		IP 65	1 & 2	IA & IB
				BJFC -250 M V	250 W HPM V	T6	IP 65	1 & 2	IA & IB				
				BJFC -70 SV	70 W HPSV	T6	IP 65	1 & 2	IA & IB				
				BJFC -70 M H	70 W M H	T6	IP 65	1 & 2	IA & IB				
				BJFC -150 SV	150 W HPSV	T6	IP 65	1 & 2	IA & IB				
				BJFC -150 M H	150 W M H	T6	IP 65	1 & 2	IA & IB				
4	CM FR/IC/SR/H837 DTD.23.01.2008	CM FR/IC/S/697 DTD.19.11.2008	BJFC -400 M V FLAM EPROOF/W P CONTROL GEAR BOX	BJFC -400 M V	400 W HPM V	T6	IP 65	1 & 2	IA & IB				
				BJFC -400 SV	400 W HPSV	T6	IP 65	1 & 2	IA & IB				
				BJFC -400 M H	400 W M H	T6	IP 65	1 & 2	IA & IB				
5	CM FR/IC/SR/H909 DTD.08.02.2008	CM FR/IC/S/695 DTD.19.11.2008	BJFB -150/200 FLAM EPROOF BULKHEAD LUM INARE	BJFB -80 M V	80 W HPM V	T4	-	1 & 2	IA & IB				
				BJFB -125 M V	125 W HPM V	T3	-	1 & 2	IA & IB				
				BJFB -70 SV	70 W HPSV	T4	-	1 & 2	IA & IB				
				BJFB -70 M H	70 W M H	T4	-	1 & 2	IA & IB				
				BJFB -150 SV	150 W HPSV	T3	-	1 & 2	IA & IB				
				BJFB -150 M H	150 W M H	T3	-	1 & 2	IA & IB				
				BJFB -160 M LL	160 W M LL	T3	-	1 & 2	IA & IB				
				BJFB -1X26 CFL	26 W CFL	T6	-	1 & 2	IA & IB				
				BJFB -100 GLS	100 W GLS	T4	-	1 & 2	IA & IB				
				BJFB -150 GLS	150 W GLS	T3	-	1 & 2	IA & IB				
				BJFB -200 GLS	200 W GLS	T3	-	1 & 2	IA & IB				
6	CM FR/IC/SR/H798 DTD.11.01.2008	CM FR/IC/S/H438 DTD.03.09.2008	BJFFIL -140 FLAM EPROOF/W P FLUORESCENT TUBE LIGHT LUM INARE	BJFFIL -140	1X40 W FIL	T6	IP 65	1 & 2	IA & IB				
				BJFFIL -240	2X40 W FIL		IP 65	1 & 2	IA & IB				
				BJFFIL -136	1X36 W FIL	T6	IP 65	1 & 2	IA & IB				
				BJFFIL -236	2X36 W FIL		IP 65	1 & 2	IA & IB				
				BJFFIL -120	1X20 W FIL	T6	IP 65	1 & 2	IA & IB				
				BJFFIL -220	2X20 W FIL		IP 65	1 & 2	IA & IB				
				BJFFIL -118	1X18 W FIL	T6	IP 65	1 & 2	IA & IB				
				BJFFIL -218	2X18 W FIL		IP 65	1 & 2	IA & IB				
				BJFFIL -128	1X28 W (T5)		IP 65	1 & 2	IA & IB				
				BJFFIL -228	2X28 W (T5)		IP 65	1 & 2	IA & IB				
				BJFFIL -114	1X14 W (T5)		IP 65	1 & 2	IA & IB				
				BJFFIL -214	2X14 W (T5)		IP 65	1 & 2	IA & IB				
				BJFFIL -1X20 CFL	1X20 W CFL	T6	IP 65	1 & 2	IA & IB				
		7		CM FR/IC/SR/H808 DTD.16.01.2008		BJRJB -100 FLAM EPROOF/W P JUNCTION BOX	BJRJB -100	-	-	IP 65	1 & 2	IA & IB	

## FLAM EPROOF LUM INAIRES PRODUCT RANGE DETAILS

SR.NO.	CM FR REVALIDATION CERTIFICATE NO. & DATE	CM FR SUPPLM ENTARY CERTIFICATE TO REVALIDATION CERTIFICATE NO. & DATE	ITEM	CAT NOS.	LAMP RATING	TEMP. RANGE	IP	ZONE	GAS GROUP
8	CM R/TC/P/H382 DTD.18.08.2006  REVALDATION NOT REQUIRED AS TESTED BYCM RIAS PER REVISED BS STANDARDS		BJFW -400 M V (N) FLP/W P W ELGLASS LUM NARE	BJFW -400 M V (N) BJFW -400 SV (N) BJFW -400 M H (N) BJFW -250 SV (N)	400 W HPM V 400 W HPSV 400 W M H 250 W HPSV	T 3 T 4 T 4 T 5	IP 65 IP 65 IP 65 IP 65	1 & 2 1 & 2 1 & 2 1 & 2	IA & IB IA & IB IA & IB IA & IB
9	CM R/TC/P/H387 DTD.21.08.2006  REVALDATION NOT REQUIRED AS TESTED BYCM RIAS PER REVISED BS STANDARDS		BJFFL-250/400 M V NON-INTEGRAL FLAM EPROOF/W P FLOOD LIGHT LUM NARE	BJFFL-250 M V (N) BJFFL-250 SV (N) BJFFL-400 SV (N) BJFFL-400 M H (N)	250 W HPM V 250 W HPSV 400 W HPSV 400 W M H	T 5 T 6 T 4 T 4	IP 65 IP 65 IP 65 IP 65	1 & 2 1 & 2 1 & 2 1 & 2	IA & IB IA & IB IA & IB IA & IB
10	CM R/TC/P/H378 DTD.18.08.2006  REVALDATION NOT REQUIRED AS TESTED BYCM RIAS PER REVISED BS STANDARDS		BJFW -250 M V (N) FLAM EPROOF/W P W ELGLASS LUM NARE	BJFW -250 M V (N) BJFW -150 SV (N) BJFW -150 M H (N)	250 W HPM V 150 W HPSV 150 W M H	T 4 T 4 T 4	IP 65 IP 65 IP 65	1 & 2 1 & 2 1 & 2	IA & IB IA & IB IA & IB
11	CM R/TC/P/H354 DTD.10.08.2006  REVALDATION NOT REQUIRED AS TESTED BYCM RIAS PER REVISED BS STANDARDS		BJFAOL-01 FLP/W P AVATDN OBSTRUCTDN LIGHT	BJFAOL-01	NEON SPRAL LAMP 75 VA	T 6	IP 65	1 & 2	IA & IB

## INCREASED SAFETY LUM INAIRES

SR. NO.	ITEM	CAT NO. & DATE	CM RICERTIFICATE NOS. DATE	CM RIADDENDUM S & SUPPLM ENTARY CERTIFICATES	
				NOS. DATE	ADDITIONS
1	BJDP/DT/TE/ESW -200 INCREASED SAFETY W ELGLASS FITTING SUITABLE FOR 150 /200 W GLS LAMP 80 /125 W HPM V LAMP 160 W M L LAMP IP 65	BJDP/DT/TE/ESW -200 INCREASED SAFETY NON INTEGRAL W ELGLASS FITTING	CM R/TC/P/H1335 DTD.10.11.1998	CM R/TC/P/H1259 DTD.14.10.1999	23 W CFL LAMP 70 W HPSV LAMP WITH BUILT IN IGNITOR LAMP HOLDER 2 PIN /3 PIN /E27 BAKELITE /GFP /PORCELAIN CONNECTOR
2	BJEW -80/125 INCREASED SAFETY W ELGLASS FITTING SUITABLE FOR 150 /200 W GLS LAMP 80 /125 W HPM V LAMP 160 W M L LAMP IP 65	BJEW -80/125 INCREASED SAFETY NON INTEGRAL W ELGLASS FITTING	CM R/TC/P/H1455 DTD.26.11.1998	CM R/TC/S/H1365 DTD.15.11.1999	23 W CFL LAMP 70 W HPSV LAMP WITH OR WITHOUT BUILT IN ADOPTOR LAMP HOLDER 2 PIN/3 PIN /E27
3	BJEW -80/125 (N) & BJEW -250 M V (N) INCREASED SAFETY W ELGLASS FITTING SUITABLE FOR 80/125 W /250 W HPM V LAMP 70 W HPSV LAMP WITH BUILT IN IGNITOR 70 W /150 W HPSV LAMP WITHOUT IGNITOR IP 65	BJEW -80/125 (N) INCREASED SAFETY INTEGRAL W ELGLASS FITTING	CM R/TC/P/H1260 DTD.14.10.1999	CM R/TC/ADDEN/H193 DTD.16.02.2000	BJEW -80/125 (N) INTEGRAL & BJEW -250 M V (N) NON INTEGRAL INCREASED SAFETY W ELGLASS FITTING
4	BJECG -80/125 M V INCREASED SAFETY/W P CONTROLGEAR BOX IP 65	BJECG -80/125 INCREASED SAFETY CONTROLGEAR BOX	CM R/TC/P/SL/H1454 DTD.26.11.1998	CM R/TC/S/H1310 DTD.29.10.1999	(A) 70 W (B) CONNECTOR AS PORCELAIN /GFP /ELM EX
5	BJECG -250 HPM V INCREASED SAFETY CONTROLGEAR BOX SUITABLE FOR 250 W HPM V /150 W HPSV LAMP IP 65	BJECG -250 INCREASED SAFETY CONTROLGEAR BOX	CM R/TC/P/H1361 DTD.12.11.1999		

**Bajaj Electricals Ltd.***Inspiring Trust*

BRANCH	PHONE	FAX	E-mail
<b>AHM EDABAD</b> 106, Sakar III, Off Ashman Road Navrangpura, Ahmedabad 380 014.	079-27543964, 27543967, 27540397	079-27543950	lm_am_ahm@bajajelectricals.com
<b>BANGALORE</b> Bajaj Bhavan, No. 16, Residency Road, Bangalore 560 025.	080-22235486, 22238984, 22275505	080-22214878, 22275505	lm_am_ban@bajajelectricals.com
<b>BHUBANESWAR</b> Kharavela Nagar, Janpath, Bhubaneswar 751 001.	0674-2390697, 2396980, 2394052	0674-2390294	lm_am_bhu@bajajelectricals.com
<b>CHANDIGARH</b> SCO 52, Sector-26, Madhya Marg, Chandigarh 160 026.	0172-4303211	0172-2792932	lm_am_chd@bajajelectricals.com
<b>CHENNAI</b> Navin's Presidium, 8th Floor, A-Block, Old No. 103-A, Nelson Manickam Road, Ambikavai, Chennai 600 029	044-42162200	044-42163300	lm_am_che@bajajelectricals.com
<b>COCHIN</b> CRL House, 42/1107, Tata Oil Mills Road, Cochin 682 018.	0484-2391119, 2396128, 2392039	0484-2391744	lm_am_ccn@bajajelectricals.com
<b>DELHI</b> 1/10, Asaf Ali Road, New Delhi 110 002	011-23236055, 23233056, 23235057	011-23230214	lm_am_del@bajajelectricals.com
<b>GUWAHATI</b> Agarwal House, Christian Basti, G.S. Road, Guwahati 787 005.	0361-2346497, 2346498, 2346499	0361-2346496	lm_am_guw@bajajelectricals.com
<b>HARYANA</b> 1/10, Asaf Ali Road, New Delhi 110 002	011-43725500	011-23230214	lm_am_hyr@bajajelectricals.com
<b>HYDERABAD</b> H.No. 6-3-1090/2, 3rd Floor, Vittal Das Chambers, Rajbhavan Road, Somaji Guda, Hyderabad 500 082.	040-23442932, 23442933, 2344293	040-23302745	lm_am_hyd@bajajelectricals.com
<b>INDORE</b> Commerce House, 3rd Floor, 7 Race Course Road, Indore 452 003, M.P.	0731-2548909/10/18	0731-2548911	lm_am_ind@bajajelectricals.com
<b>JAIPUR</b> Raghukulam Niwas, M.I. Road, Jaipur 302 001.	0141-2377364, 2369541, 2369542	0141-2374261	lm_am_jai@bajajelectricals.com
<b>KOLKATA</b> 10, Ganesh Chandra Avenue, Kolkata 700 013.	033-22379270, 22377657, 22216638	033-22259111	lm_am_cal@bajajelectricals.com
<b>LUCKNOW</b> Bajaj Bhavan, 21/32 A, Tikka Marg, Lucknow 226 001.	0522-2620595, 2613549	0522-2626513	lm_am_luc@bajajelectricals.com
<b>MUMBAI</b> Harchandrai House, 3rd Floor, 81, Queens Road, Marine Lines, Mumbai 400 002.	022-22089091	022-22089193	lm_am_mum@bajajelectricals.com
<b>NAGPUR</b> 2nd Floor, Saraf Court, Opp. Yashwant Stadium, Dhantoli, Nagpur	0712-2440318, 2440319	0712-2420102	lm_am_war@bajajelectricals.com
<b>NODA</b> Flat No. 505-507, 5th Floor, Vikant Tower, 4, Rajendra Place, Pusa Road, New Delhi 110 008.	011-25711961, 25861963, 25861964	011-25861962	lm_am_del2@bajajelectricals.com
<b>PATNA</b> Kashi Place, Dak Bunglow Road, Patna 800 001.	0612-2231427, 2220155, 2225911	0612-2231978, 2231427	lm_am_pat@bajajelectricals.com
<b>PUNE</b> Mameek Hall, 2, General Thimmayya Road, Pune 411 001.	020-26360801, 26361321, 26360703	020-26360698	lm_am_pun@bajajelectricals.com
<b>RAIPUR</b> Bajaj Bhavan, G.E. Road, Near Mahaveer Garden, Raipur 492 001.	0771-2263986, 2263976, 2660166	0771-2263310	lm_am_rai@bajajelectricals.com
<b>LUMINAIRES HEAD OFFICE and R&amp;D OFFICE</b> 15/17, Sant Savta Marg, Reay Road, Mumbai 400 010.	022-2376 5000	Fax: 022-2373 0504	
<b>HEAD OFFICE</b> 51, Mahatma Gandhi Road, Mumbai 400 001.	022-22043780, 22851462, 22875135	Fax: 022-22828250	
<b>REGISTERED OFFICE</b>			



**Bajaj Electricals Limited**

*Inspiring Trust*

**Luminaires Business Unit,**

15/17, Sant Savta Marg, Reay Road, Mumbai - 400 010. Phone : 022-2376 5000, Fax : 022-23730504,  
E-mail : [luminaires@bajajelectricals.com](mailto:luminaires@bajajelectricals.com) , Website : [www.bajajelectricals.com](http://www.bajajelectricals.com)